

What's New in CABINET VISION 2021

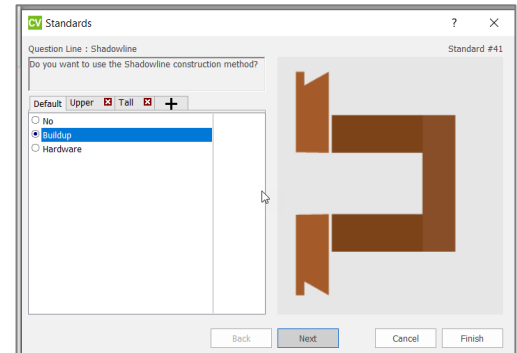
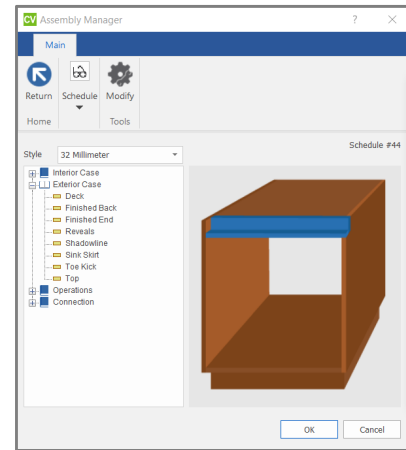


Assembly Level

- Configure Shadowline per Cabinet in Cabinet Properties CA
- Define Shadowline per Face Split CA

Assembly Manager

- Shadowline Construction CA
- Use Top with Sink Skirt CA
- Control Top Grain Direction CA CL
- Control Sub End Grain Direction CA CL
- Control Machining Face on Sub End CA CL



Bid Center

- Modernized Bid Center Look & Feel



Door Manager

- Redesigned Door Manager

- CAD Shaping of Door Parts



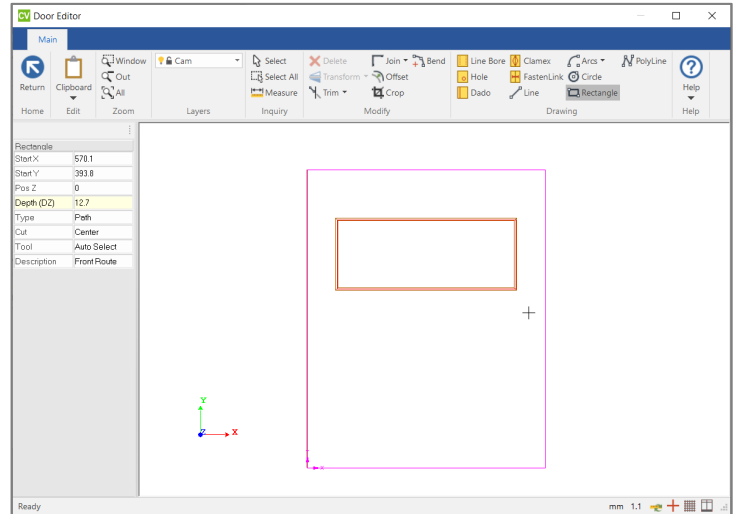
- Object Tree available in Door Editor

- Door CAM Editor



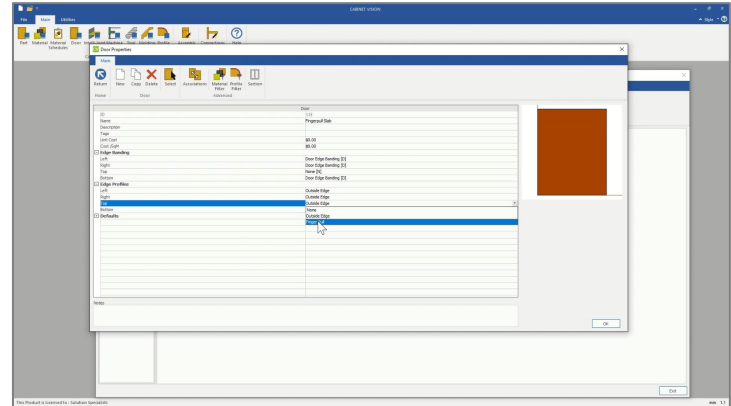
- Applied Outside and Inside Edge Door Moldings

- Set Oversize Vale on Multi Piece Doors



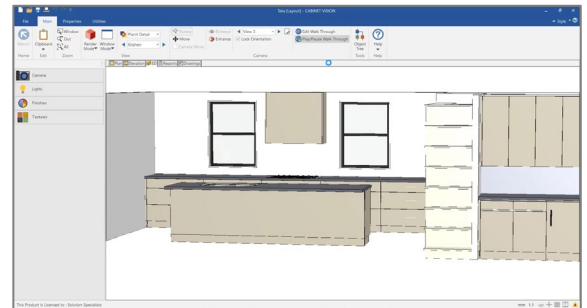
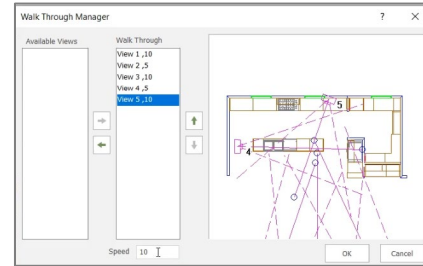
Door Manager

- Assign Finger Pull to Edges
- Door Association Matrices
- Add Tags to Door to Aid Searches
- Assign Material Schedules to Multiple Doors
- Assign Profiles to Multiple Doors
- Mirror Door Copy
- Door Data Stored within Job (formally global)



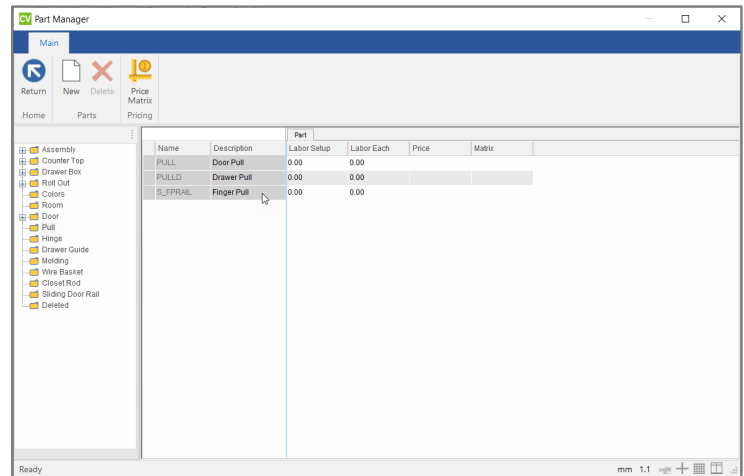
General

- CABINET VISION Product Configuration
- Customise Quick Access Toolbar
- Customise the Ribbonbar
- Add Keyboard Shortcuts for Ribbon Commands
- Create Walk Throughs Using Saved Views
- Updated Modern Button Images throughout User Interface
- New Modern User Interface Styles Available
- SQL Data now all Stored in CVData SQL Database (CxMaterials, CxConstruction, All DDB Door databases)



Part Manager

- Shadowline Rail Part (S_SHRAIL)
- Shadowline Edge Part (S_SHEDGE)
- Shadowline Hardware Part (S_SHHRDW)
- Applied Inside Edge Molding Part (S_APPLIE)
- Applied Outside Edge Molding Part (S_APPLOE)
- Finger Pull (S_FPRAIL)



Profile Manager

- Door Profiles Created and Edited in Profile Manager
- Finger Pull Door Profile

Rendering

- +Tour Add-On for Advanced Realtime Render Walk Throughs 

User Created Standards

- Collapsible Nodes

Legend

*Cabinets 

*Closets 

x2D CAD 

xBidding 

xShaping 

+Tour 

Authorised **Hexagon**
reseller of:

CABINET VISION

