

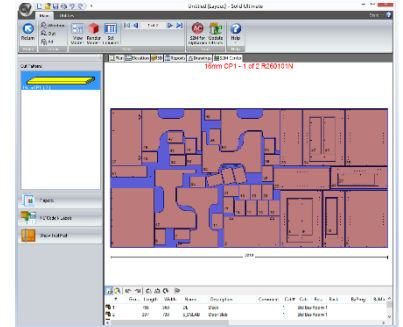
# : add-on products

power up your software

## True Shape Nesting

The TrueShape™ Nesting add-on is a geometric nesting solution which optimizes rectangular and irregular shaped parts together. Parts are rotated into position interlocking shapes together to maximize material yield. This add-on also allows you to nest parts inside of other parts for maximum yield. Take full advantage of all the S2M Center features including Onion Skins, Return Onion Skins, and Bridging!

\*S2M Center Block Nesting Add-on



## Grain Matching

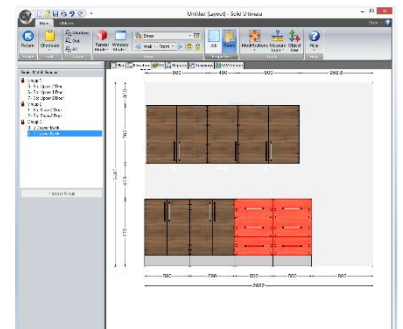
Need Grain Match capability? No problem! This add-on, which is fully integrated into Cabinet Vision & Cabnetware allows you to Grain Match both Vertical and Horizontal Grain for one Cabinet or a Group of Cabinets.

\*Available with Solid Standard or Higher

\*Requires S2M Standard or Higher

\*\*Included with Solid Ultimate & Cabnetware Ultimate

\*\*Requires S2M Standard or Higher



## MDF Door Maker

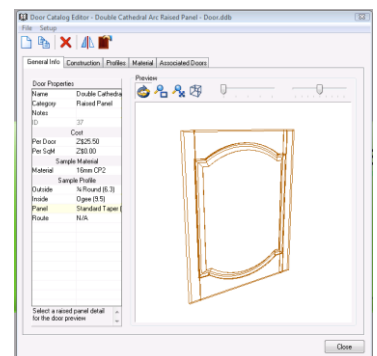
MDF Door Maker allows you to custom create and output multiple tooling instructions for virtually any MDF door style to the S2M Center. Complete CNC instructions for machining the doors are created automatically from your design.

\*Available with Solid Standard or Higher

\*Requires S2M Standard or Higher

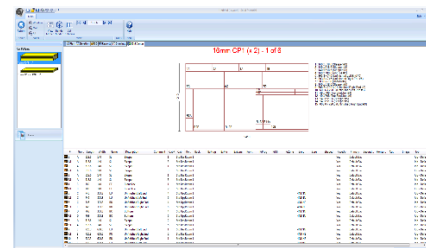
\*\*Included with Solid Ultimate & Cabnetware Ultimate

\*\*Requires S2M Standard or Higher



## Panel Optimiser and NC Optimiser

The Panel Optimiser allows you to maximise your material usage and reduce your waste. Fully integrated with Cabinet Vision or Cabnetware, Panel Optimiser allows you to quickly and easily convert your drawings into printed patterns for use with your panel saw (non NC). NC Optimiser allows you to quickly and easily convert your drawings into patterns for importing directly to your NC panel saw.



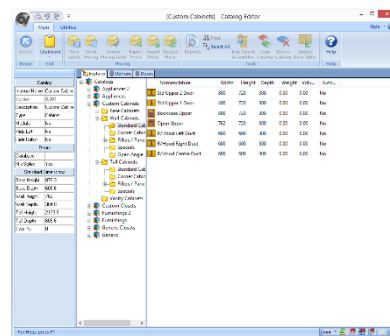
\*Not available in Solid Drafter

+Panel Optimiser – Available in Solid Essential or higher

+ NC Optimiser – Available in Solid Standard or higher

## Catalog Editor

Catalogs use your customized system settings from Cabinet Vision, including materials, material schedules, doors and drawers, profiles, construction methods, and parts pricing (if applicable) into a new, distributable catalog. Distributable (or read only) Catalogs protect your Catalog data so that items cannot be modified and saved back into the catalog after it is distributed to end-users.



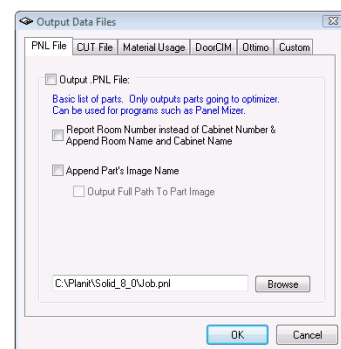
\*Recommended for Solid Advanced and Solid Ultimate Only

## Conversion Utility

Used to export a parts list from Cabinet Vision or Cabnetware into 3<sup>rd</sup> party panel optimisation software or a MRP/ERP System.

Conversion Utility outputs several standard files:

- PNL File (Generic cut-list file in CSV format)
- CUT File (Used by Cutrite™, Tigerstop™, and other optimisation applications)
- MatSum.MDB (Material Summary in Microsoft™ Access™ format)
- PRN File (For DoorCIM™)
- MLC File (For Ottimo™)
- Or build your own custom output & file type



\*Requires Solid Standard or higher