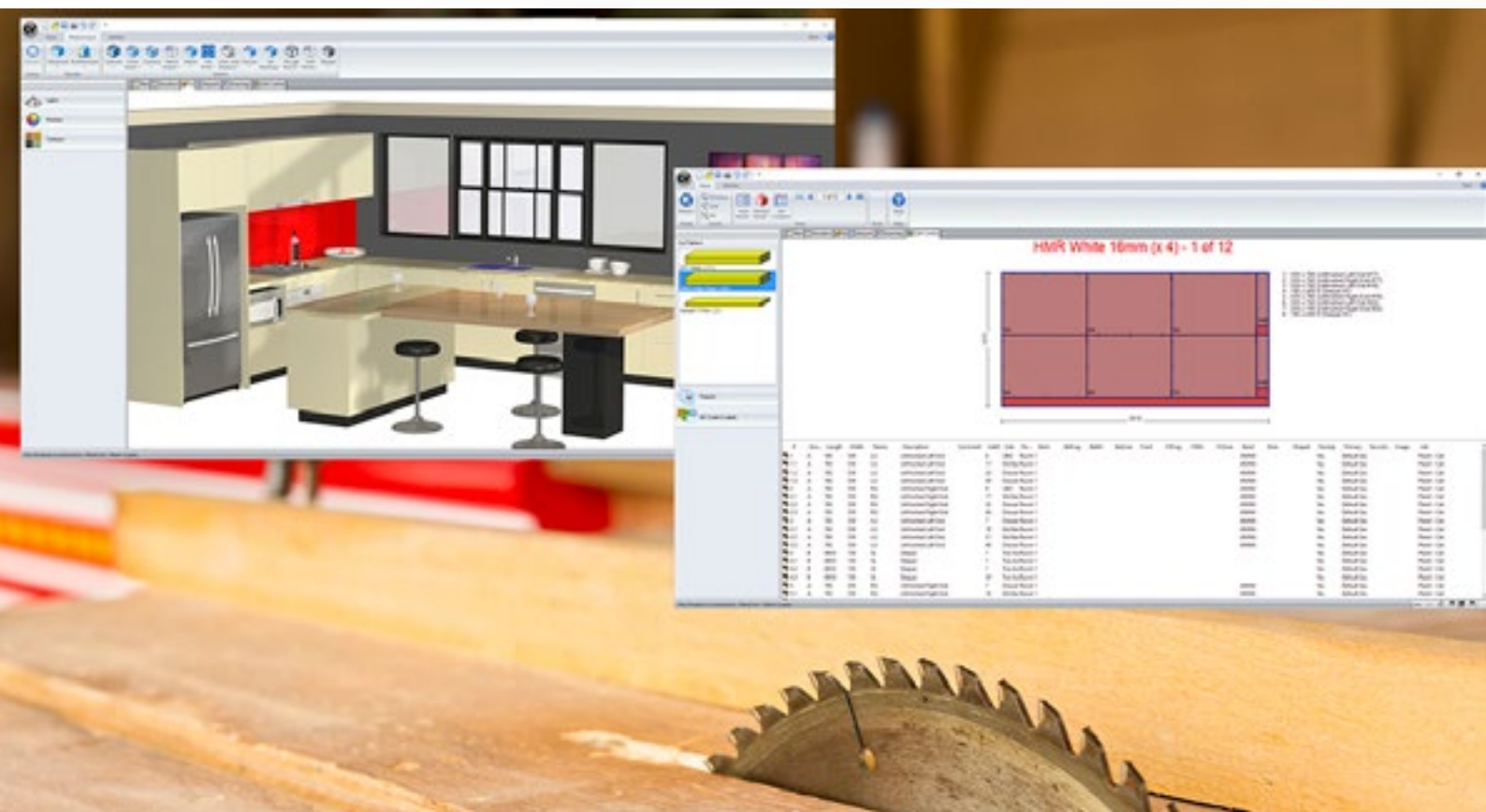


Essential Tools of the Trade

SOLID ESSENTIAL WITH PANEL OPTIMISER



COMPLETE DESIGN-TO-MANUFACTURE SOLUTIONS

The Essential Tools of the Trade is the starting point for cabinet manufacturers looking to develop their business and take it to the next level.

The Essential Tools of the Trade provides businesses with the functionality to improve their design processes in the office and increase material yield in the factory. Solid Essential provides you the detail and planning capabilities and Panel Optimiser helps maximise your material usage and reduce waste.

The package also includes:

- Cabinet Vision Solid Essential with Panel Optimiser
- Ready-to-go Database
- 12 months Customer Care (includes phone support, online forums and updates)
- Access to instructional videos
- 1 x online fundamentals - to run through the basics of using Cabinet Vision
- Online sessions to setup and install your software
- Online training of Cabinet Vision - up to 8 hours to develop your skills further

*Other training courses and additional products available

Essential Tools of the Trade

MARKET LEADING SOFTWARE
 PROVIDING VALUE FOR BUSINESSES



Produce realistic renders to present your designs to clients



Easily layout your job, creating plans & elevation view to help communicate details of your project



Produce a range of reports to give you the information you need out of your job



Produce Optimised cutting patterns to assist your saw operator and maximise material yield

START & FINISH THE JOB

Reduce time without needing additional 3rd party programs. Do it all in the one program.

COMPLETE YOUR DESIGNS

With plan and elevation views and 3D Photo realistic renders.

EASILY CUSTOMISE CABINETS

And add to your library with cabinet editor.

COMMUNICATE IMPORTANT PRODUCTION INFORMATION

to the shop floor with integrated part labels and reports.

PRODUCE OPTIMISED PATTERNS

for your saw to ensure you cut efficiently and accurately.

